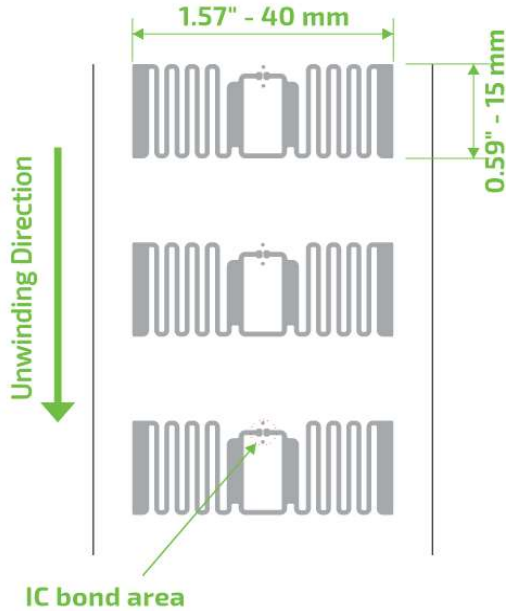


CCRR A61F 40x15

UHF RFID 860 to 960 MHz

Product Design



Description

This is a compact, versatile and high-performance inlay, Designed for asset, and inventory management and diverse applications.

Market Applications

- Apparel
- Asset management
- Supply Chain & Logistics
- General purpose

Key Benefits

- Fast reading
- Traceability
- Serializing Items
- Agile counting and tracking

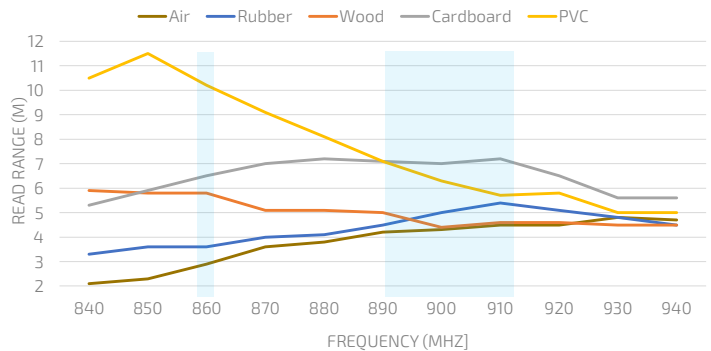
TECHNICAL SPECIFICATION	
Size	Antenna 40x15 mm
Web	48 mm / 1.890"
Pitch	26.307 mm / 1.036"
Gap	11.307 mm / 0.445"
SKU	IN00128 Inlay A61F R6 IN00129 Inlay A61F R6P IN00108 Inlay A61F R6B
Standards	RAIN RFID ISO 18000-63 and EPC Global Gen2v2
Integrated Circuit	R6 TID 96 bits EPC: 96 bits, User: none R6-P 48 uniques EPC: 96/128 bits, User: 64/32 bits R6-B EPC: 96 bits, User: None
Formats	Dry Inlay, Wet Inlay, Sticker Labels, and RFID tags could be developed according to the necessity
Substrate	PET with aluminum antenna
Roll	Qty Max. Diameter Core Size
Dry Inlay	22,000 < 398.8 mm / < 15,7" 76.2 mm / 3"
Thickness*	62 - 67 microns
Temperature	-40 °C to 85°C for operation -40 °C to 85/125 °C for storage

* The thickness excludes the spacer tape.

Structure



Read range



All graphs are generated in laboratory. Real-life performance may vary. Reader power: 29 dBm. Antenna sensitivity: -70 dBm.

Angular Sensitivity

