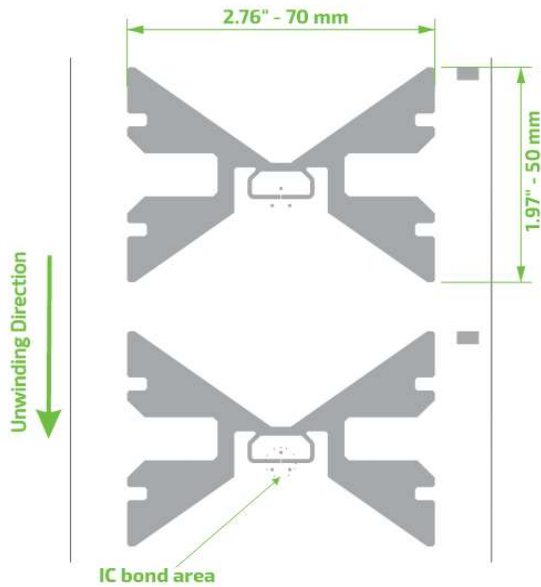


CCRR D61 70x50

UHF RFID 860 to 960 MHz

Product Design



Description

Versatile inlay, designed for people control access, luggage tracking, logistics control, and diverse applications.

Market Applications

- Identification badge
- Asset management
- Logistics
- Inventory

Key Benefits

- High performance
- Fast reading
- Traceability
- Loss prevention

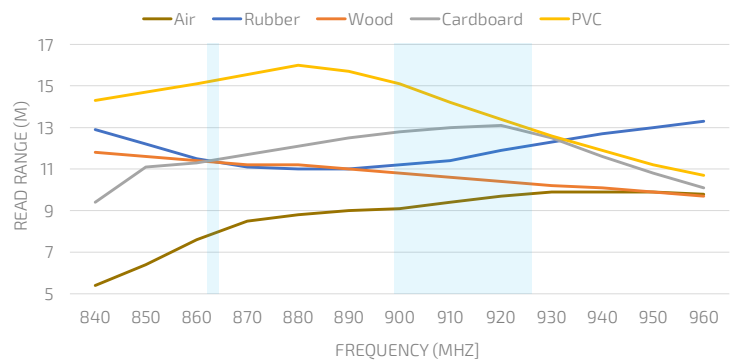
TECHNICAL SPECIFICATION			
Size	Antenna	Register mark	
	70x50 mm	5x3 mm	
Web	96 mm / 3.78"		
Pitch	61.383 mm / 1.03"		
Gap	6.31 mm / 0.24"		
SKU	IN00127	Inlay D61 R6	
	IN00122	Inlay D61 R6-P	
	IN00123	Inlay D61 R6-B	
Standards	RAIN RFID ISO 18000-63 and EPC Global Gen2v2		
Integrated Circuit	R6	TID 96 bits	EPC: 96 bits, User: none
	R6-P	48 uniques	EPC: 96/128 bits, User: 64/32 bits
	R6-B		EPC: 96 bits, User: None
Formats	Dry Inlay, Wet Inlay, Sticker Labels, and RFID tags could be developed according to the necessity		
Substrat	PET with aluminum antenna		
Roll	Qty	Max. Diameter	Core Size
	Dry Inlay	22,000	< 398,8 mm / < 15,7"
Thickness*	62 - 67 microns		
Temperature	-40 °C to 85°C for operation		
	-40 °C to 85/125 °C for storage		

* The thickness excludes the spacer tape.

Structure



Read range



All graphs are generated in laboratory. Real-life performance may vary.
Reader power: 29 dBm. Antenna sensitivity: -70 dBm.

Angular Sensitivity

