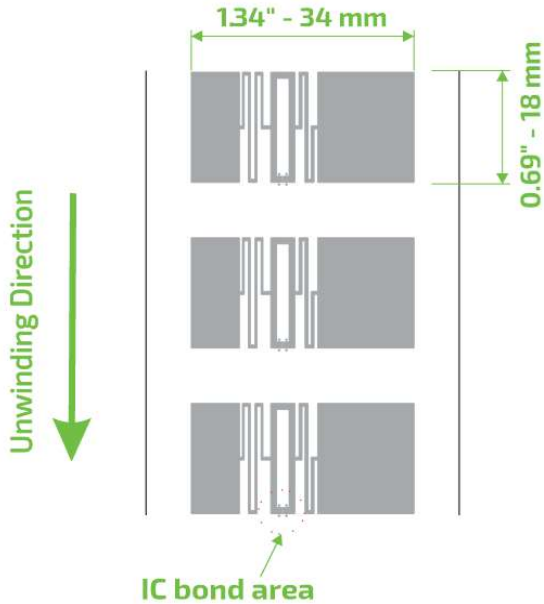


CCRR ISLA 34x18

UHF RFID 860 to 960 MHz

Product Design



Description

This inlay was designed to be applied on metal surfaces, and the metal object amplifies the range of reading. It is also suitable for other surfaces as: wood, rubber, PVC, and cardboard for data collection.

Market Applications

Logistics & Supply chain
Asset management
Inventory accuracy

Key Benefits

Fast reading
Quickness of counting and tracking
Traceability

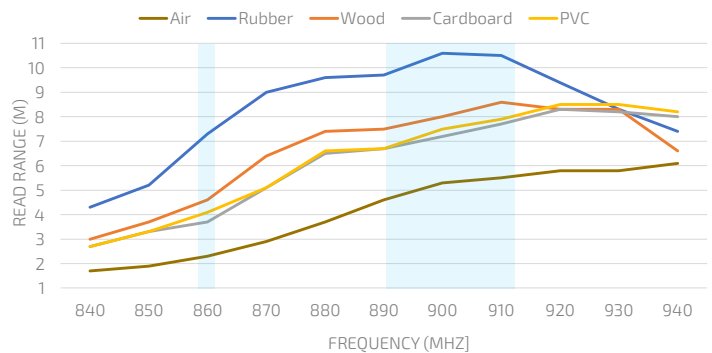
TECHNICAL SPECIFICATION	
Size	Antenna 34x18 mm
Web	48 mm / 1.89"
Pitch	26.307mm / 1.036"
Gap	8.307 mm / 0.327"
SKU	IN00060 Inlay ISLA R6 IN00061 Inlay ISLA R6-P IN00118 Inlay ISLA R6-B
Standards	RAIN RFID ISO 18000-63 and EPC Global Gen2v2
Integrated Circuit	R6 TID 96 bits EPC: 96 bits, User: none R6-P 48 uniques EPC: 96/128 bits, User: 64/32 bits R6-B EPC: 96 bits, User: None
Formats	Dry Inlay, Wet Inlay, Sticker Labels, and RFID tags could be developed according to the necessity
Substrate	PET with aluminum antenna
Roll	Qty Max. Diameter Core Size
Dry Inlay	22,000 < 398.8 mm / < 15,7" 76.2 mm / 3"
Thickness*	62 - 67 microns
Temperature	-40 °C to 85°C for operation -40 °C to 85/125 °C for storage

* The thickness excludes the spacer tape.

Structure



Read range



All graphs are generated in laboratory. Real-life performance may vary.
Reader power: 29 dBm. Antenna sensitivity: -70 dBm.

Angular Sensitivity

