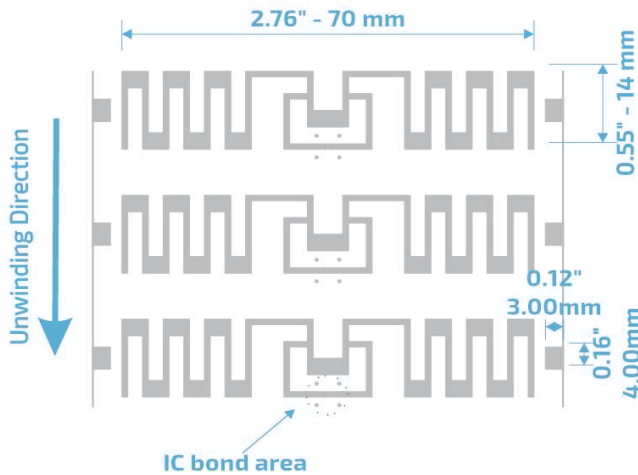


# E702 70x14

UHF RFID 860 to 960 MHz

## Product Design



## Description

Versatile inlay, suitable for a wide range of materials: wood, plastic, cardboard, rubber, cotton tissue and denim.

## Market Applications

- Retail
- Asset Management
- Global operator
- Supply chain, inventory and logistics

## Key Benefits

- Quick Reading
- Speed to count
- Traceability

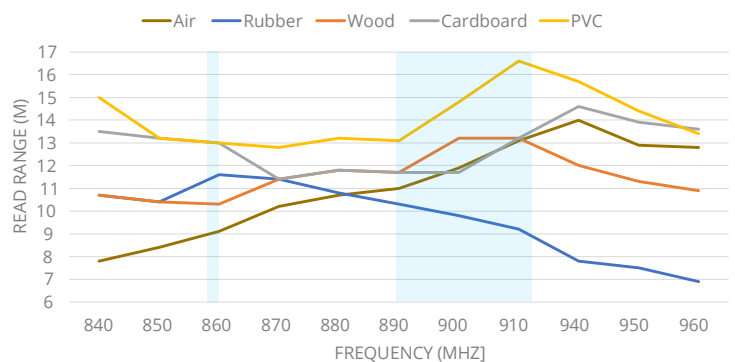
TECHNICAL SPECIFICATION		
<b>Size</b>	Antenna	Register mark
	70x14 mm	3x4 mm
<b>Web</b>	80.00 mm / 3.14"	
<b>Pitch</b>	26.307 mm / 1.036"	
<b>Gap</b>	12.307 mm / 0.485"	
<b>SKU</b>	IN00069	Inlay E702 M750
	IN00070	Inlay E702 M730
<b>Standards</b>	RAIN RFID   ISO 18000-63 and EPC Global Gen2v2	
<b>Integrated Circuit</b>	M730	TID 96 bits EPC: 128 bits, User: none
	M750	48 uniques EPC: 96 bits, User: 32 bits
<b>Formats</b>	Dry Inlay, Wet Inlay, Sticker Labels, and RFID tags could be developed according to the necessity	
<b>Substrate</b>	PET with aluminum antenna	
<b>Roll</b>	Qty	Max. Diameter
	15,000	< 398,8 mm / < 15,7"
<b>Core Size</b>	76.2 mm / 3"	
<b>Thickness*</b>	62 - 67 microns	
<b>Temperature</b>	-40 °C to 85°C for operation	
	-40 °C to 85/125 °C for storage	

\* The thickness excludes the spacer tape.

## Structure



## Read range



All graphs are generated in laboratory. Real-life performance may vary. Reader power: 29 dBm. Antenna sensitivity: -70 dBm.

## Angular Sensitivity

